

# STUDIO12

MINIMAL 4.0

frigomeccanica   


frigomeccanica

# STUDIO12

## MINIMAL 4.0

EVOLUZIONE DEL MINIMAL NELL'ARREDO BAR  
THE EVOLUTION OF THE MINIMAL IN BAR FURNISHINGS



LIVING

PAG 4

**SEMPLICITÀ  
E RAZIONALITÀ  
PER IL LOCALE DI OGGI**

**SIMPLICITY  
AND RATIONALITY  
FOR TODAY'S BAR**



QUICK

PAG 36

**VOLUMI E LUCE  
IN UN CONCEPT  
ACTUAL DESIGN**

**VOLUME AND  
LIGHT IN AN ACTUAL  
CONCEPT DESIGN**



# STUDIO12

## LIVING

frigomeccanica

**STUDIO12**  
LIVING

# WHITE NEST



L'ALZATA "WALL PANEL" VERSIONE LIGHT CON FONDO BIANCO, È DISPONIBILE ANCHE IN VERSIONE CON SPECCHIO (OPTIONAL). LE MENSOLE IN CRISTALLO SONO REGOLABILI IN ALTEZZA.

THE "WALL PANEL" IN THE LIGHTED VERSION WITH WHITE BACKGROUND IS ALSO AVAILABLE IN A VERSION WITH MIRROR (OPTIONAL). HEIGHT ADJUSTABLE CLEAR PLATE GLASS SHELVES.

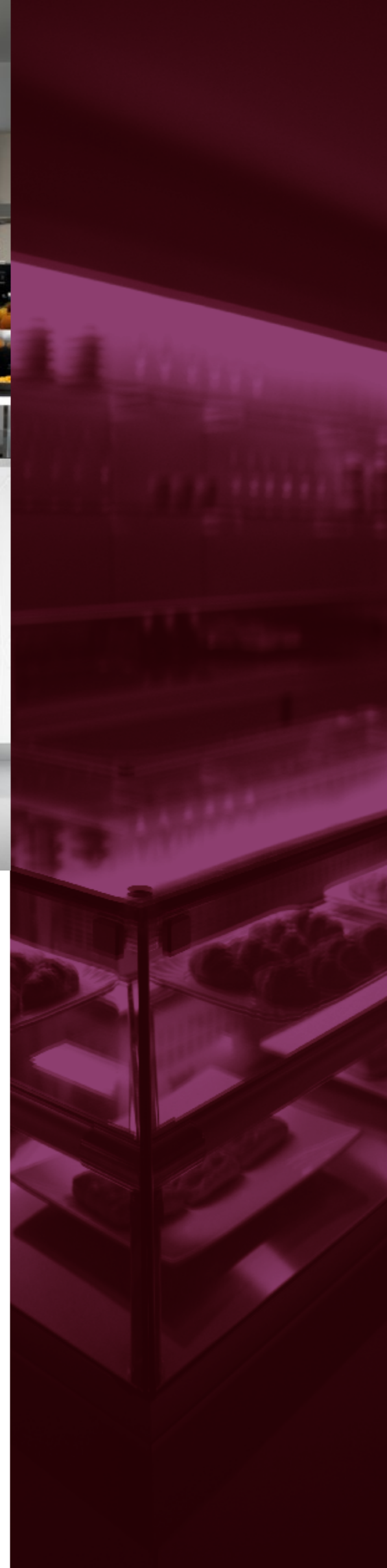
**STUDIO12**  
LIVING

# WHITE NEST





frigomeccanica



**STUDIO12**  
LIVING

# WHITE NEST

ESCLUSIVO RIVESTIMENTO DALLA SUPERFICIE AVVOLGENTE E MATERICA. MORBIDI INCROCI GEOMETRICI DI LINEE E RILIEVI, LO STILE CHIARO E PULITO DI STUDIO 12 WHITE NEST.

EXCLUSIVE COVERING WITH A TACTILE, ENVELOPING SURFACE. SOFT INTERSECTING GEOMETRIC LINES AND RELIEFS. THE CLEAR, CLEAN STYLE OF STUDIO 12 WHITE NEST.



REFRIGERAZIONE A BASSA VENTILAZIONE  
PER LA VETRINA SNACK AD ANGOLO.  
LOW VENTILATION REFRIGERATION FOR THE  
CORNER SNACK DISPLAY CABINET

**STUDIO12**  
LIVING  
**WHITE  
NEST**





**STUDIO12**  
LIVING

# BLACKK





**STUDIO12**

LIVING

# BLACK

LIVING BLACK È REALIZZATO IN FINITURA GLOSS BLACK CON BANGALINA DARK CARBON

LIVING BLACK COMES WITH GLOSS BLKACK FINISH AND DARK CARBON COUNTERTOP

BLACK BOX: ELEMENTI GIORNO A PARETE IN LAMINATO NERO LUCIDO, CON MENSOLE IN CRISTALLO DI SPESSORE E FARETTO AD INCASSO.

BLACK BOX: OPEN WALL ELEMENTS IN GLOSSY BLACK LAMINATE WITH THICK CLEAR PLATE GLASS SHELVES AND SUNKEN SPOTLIGHT



frigomeccanica



< VETRINA LINEARE SNACK CON REFRIGERAZIONE STATICA (DI SERIE) O A BASSA VENTILAZIONE (OPTIONAL).  
 < LINEAR SNACK DISPLAY CABINET WITH STATIC REFRIGERATION (STANDARD) OR LOW VENTILATION REFRIGERATION (OPTIONAL).



< STUDIO 12 PROPONE ANGOLI REALIZZATI IN STRUTTURA ALUKUADRO CON PIANO IN CRISTALLO RETROLACCATO NERO.  
 < STUDIO 12 PROPOSES CORNERS WITH ALUKUADRO STRUCTURE WITH BLACK BACK-LACQUERED CLEAR PLATE GLASS TOP.  
 > IL PIANO DI SERVIZIO DARK CARBON HA FINITURA OPACA ED È ANTIGRAFFIO.  
 > THE DARK CARBON SERVICE COUNTER HAS A SCRATCH RESISTANT MATTE FINISH.

**STUDIO12**  
 LIVING  
**BLACK**





**STUDIO12**  
LIVING  
WHITE WOOD



**STUDIO12**  
LIVING

# BAMBOO





**STUDIO12**  
LIVING  
BAMBOO

**STUDIO12**  
LIVING  
BLACK DUAL



frigomeccanica



# CHERRY





ELEMENTI ALUWALL:  
REALIZZATI IN LAMINATO NERO LUCIDO  
E STRUTTURA ALUKUADRO.

ALUWALL ELEMENTS:  
CONSTRUCTED IN GLOSSY BLACK LAMINATE  
WITH ALUKUADRO STRUCTURE.

**STUDIO12**  
LIVING  
**CHERRY**







# STUDIO12

# QUICK

frigomeccanica

# STUDIO12 QUICK WING



frigomeccanica



> PLAFONIERA LUMINOSA CON DIFFUSORE IN OPALINO E ALUKUADRO.

> LIGHT FIXTURE WITH OPALINE AND ALUKUADRO DIFFUSER



<> VETRINE SNACK: NEUTRE, FREDDE, CALDE O CON ENTRAMBE LE FUNZIONI.

<> SNACK DISPLAY CABINETS: AMBIENT, REFRIGERATED, HEATED OR WITH BOTH FUNCTIONS

**STUDIO12**  
QUICK  
WING





**STUDIO12**  
QUICK  
**WING**





**STUDIO12**  
QUICK  
OCEAN  
DRIVE





**STUDIO12**  
QUICK

# PALM BEACH



frigomeccanica



VERSIONE MINIMAL PER TWIN, VETRINA GELATI VENTILATA PROFESSIONALE DISPONIBILE IN VARIE LUNGHEZZE CON VASCHETTE PER GELATO O VASSOI PER SEMIFREDDI, IN DUE ALTEZZE H120 ED H137.

MINIMAL VERSION FOR TWIN, PROFESSIONAL VENTILATED ICE CREAM DISPLAY CABINET IN A VARIETY OF LENGTHS WITH ICE CREAM TUBS OR TRAYS FOR FROZEN DESSERTS, IN TWO HEIGHTS, H120 AND H137

**STUDIO12**  
QUICK

PALM  
BEACH

**STUDIO12**  
QUICK

# NOTTINGHAM





**STUDIO12**  
QUICK  
**SHARK**

frigomeccanica





**STUDIO12**  
QUICK  
**SHARK**

VETRINA ALBA A VETRI BASSI DRITTI H120 È REALIZZATA CON LA CONSUETA TECNOLOGIA FRIGOMECCANICA ED È DEDICATA AGLI UTENTI CON SPAZI RIDOTTI MA CHE NON VOGLIONO RINUNCIARE AD UNA MACCHINA CON CARATTERISTICHE PROFESSIONALI.

ALBA DISPLAY CABINET WITH LOW STRAIGHT GLASS PANELS H120: CONSTRUCTED WITH THE USUAL FRIGOMECCANICA TECHNOLOGY AND INTENDED FOR USERS WITH SMALL SPACES BUT WHO WANT A MACHINE WITH PROFESSIONAL CHARACTERISTICS.



**STUDIO12**  
QUICK

# MALESIA



**STUDIO12**  
QUICK  
MALESIA

ILLUMINAZIONE LED INSERITA ALL'INTERNO  
DEL PANNELLO FRONTALE (OPTIONAL).

LED LIGHTING INSERTED INTO THE  
FRONT PANEL (OPTIONAL).





STUDIO12  
QUICK

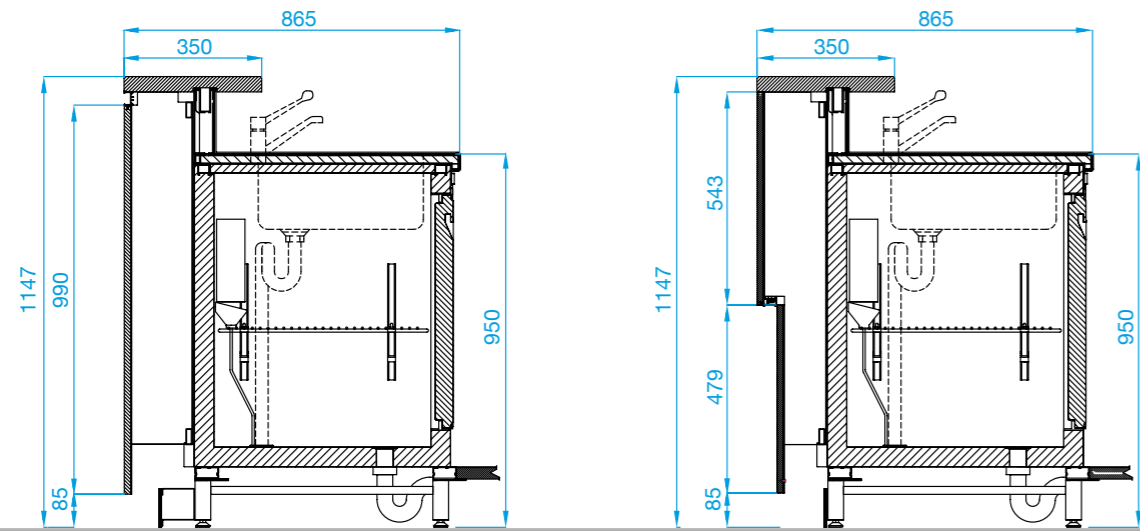
# MALESIA

IL RETROBANCO IN STRUTTURA MELAMINICA PUÒ AVERE LE BASI CON ALTEZZA TRADIZIONALE H95 OPPURE LA SERIE DELLE BASI DI FRIGOMECCANICA H100 SEMPRE NEL MEDESIMO MATERIALE. ANTE NEL COLORE SILVER GREY DI SERIE.

THE BAR-BACK IN MELAMINE STRUCTURE IS AVAILABLE WITH H95 TRADITIONAL HEIGHT BASE UNITS OR WITH THE H100 FRIGOMECCANICA BASE UNIT SERIES IN THE SAME MATERIAL. DOORS IN STANDARD SILVER GREY COLOUR.

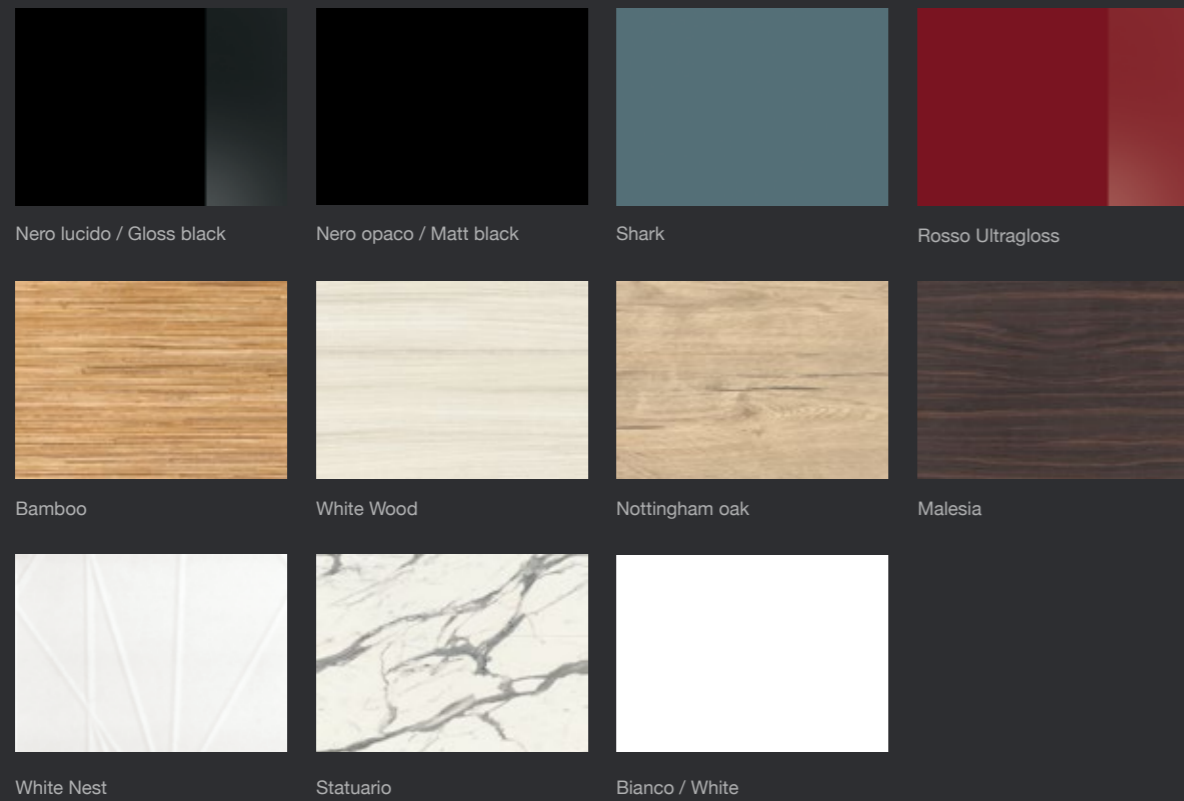
frigomeccanica





## LIVING PANNELLATURA PANELLING

## QUICK PANNELLATURA PANELLING

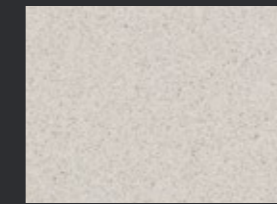


## BANCALINE IN LAMINATO LAMINATE COUNTERTOPS



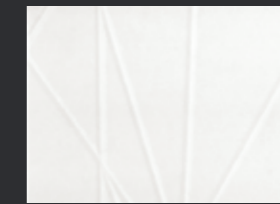
Dark Carbon

## MARMI SINTETICI OPTIONAL SYNTHETIC MARBLES OPTIONAL



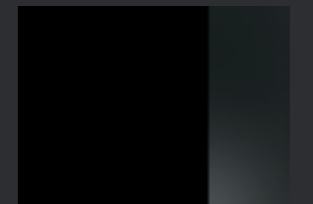
Aosta

## ALZATE WALL PANELS

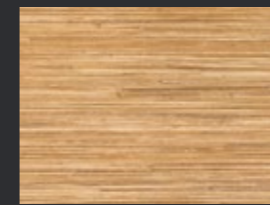


STRUTTURA/STRUCTURE:  
White Nest

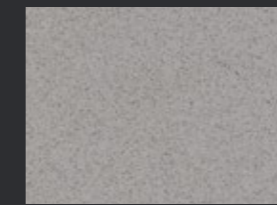
## ALUWALL BLACKBOX



Nero lucido / Gloss black



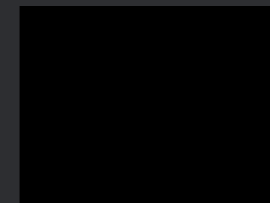
Bamboo



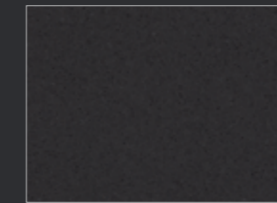
Amiata



STRUTTURA/STRUCTURE  
Malesia



Nero soft / Soft black



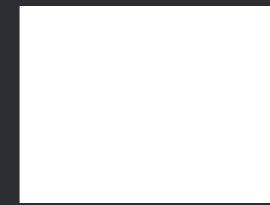
Caledonia



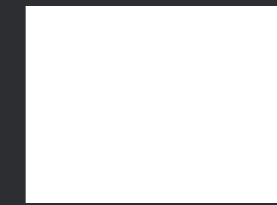
FONDO/BACK PANEL  
Bianco Opaco / Matt white

## ELEMENTI Optional:

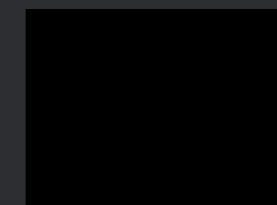
- Plafoniera a led su frontale Quick  
Led light fixture on Quick front panel
- Specchio per alzate "Wall Panel"  
Mirror for Wall Panels



Bianco / White



Polar white



Nero opaco / Matt black



**Design**  
**Roberto Garbugli**  
e  
**Ufficio Progetti Frigomeccanica**

**Frigomeccanica si riserva il diritto di apportare modifiche ai prodotti illustrati in questo catalogo in qualunque momento senza l'obbligo di preavviso.**

Frigomeccanica reserves the right to make changes to the products shown in this catalogue at any time without notice.

Frigomeccanica se réserve le droit d'apporter à tout moment des modifications aux produits illustrés dans cette brochure, sans aucune obligation de préavis.

Frigomeccanica se reserva el derecho de aportar modificaciones a los productos presentados en este catálogo en cualquier momento y sin obligación de aviso previo.

Frigomeccanica behält sich das Recht vor, jederzeit und ohne Vorankündigung Änderungen an den in diesem Katalog gezeigten Produkten vorzunehmen.

---



M A D E I N I T A L Y

**FRIGOMECCANICA**

Via del Progresso, 10  
64023 Mosciano S. Angelo (TE) Italy

Tel. +39 085 80793  
Fax +39 085 8071464

[www.frigomeccanica.com](http://www.frigomeccanica.com)  
[info@frigomeccanica.com](mailto:info@frigomeccanica.com)